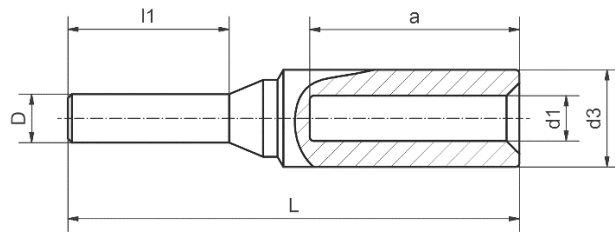


Al/Cu Weitkowitz Bi-metallic compression bolts 10-300mm²



Application

Used for connection of Aluminum cables where copper is required.

Material	Al 99,5 and Cu according to DIN EN 13601.
Surface	Uncoated
Filling	Aluminium sleeve is prefilled with compound.

cross section (mm ²)		die code	dimensions in mm							weight (100 pcs./kg)		packing unit (pcs.)	tool recommendation	
mm ²	se**		d1	d3	D	l1	L	a	total	Cu	HPW 17 164		APW 18 + HPW 18 172	
16	25	12	5,6	12	6	20	56	26	1,54	0,68		25		APW 30 + HHW 30 164, HPW 17 164
25	35	12	6,8	12	6	20	61,5	31	1,60	0,68	25			
35	50	14	8	14	7	22	72,5	41	2,51	1,03	25			
50	70	16	9,8	16	8	25	78	41	3,45	1,60	25			
70	95	18	11,2	18,5	10	30	92,5	48	5,78	2,77	10			
95	120	22	13,2	22	12	33	95	48	8,64	4,36	10			
120	150	22	14,7	23	12	38	105	49	9,67	5,14	10			
150	185	25	16,3	25	12	38	117,5	58,5	11,52	5,61	5			
185	240	28	18,3	28,5	14	44	124	58,5	16,78	8,71	5			
240	300	32	21	32	16	44	136,5	69	22,30	11,43	5			
300	-	34	23,3	34	18	46	138	69	27,24	14,37	5			